

MACHINE-DATA

Machinetype	: Sanding machine
Make	: HESS
Type	: Junior
Year	: gebraucht
Control type	:
Control	:
Storage location	: Oberkochen
Origin	: Germany
Delivery time	: after arrangement
Quotation	: ex warehouse
Price	: on request



TECHNICAL DATA

Number of sanding units	2 st.
sanding width	190 mm
Sanding height max.	4-150 mm

TECHNICAL DESCRIPTION

Hess Junior single wood sander

basic structure:

*Stable, heavy welded construction made of thick-walled rectangular hollow profiles
with additional, statically calculated bracing for optimal vibration damping.*

*Staggered grinding units with large dimensioned
Belt drive drums for slip-free belt travel. Two-point suction for direct
and airborne dust extraction with integrated blow-off device. grinding units
in heavy steel plate construction as the basis for vibration-damped,
quiet belt run. All guides as a ball linear set on hardened and
polished waves. Lasting precision thanks to protection against dust and dirt
of the sphere linear sets. Contact roller and sanding pad in a balanced ratio
to the grinding belt grain load. The large dimensioned drive drums
guarantee the full transmission of the 5.5 kW drive power of the
grinding motors on the grinding belt. This means the strongest chip removal
possible. Automatic machine stop triggering if the tape breaks. Optical display*

on control panel. Sanding shoe for finish made of special material with optimal Heat dissipation and additional sliding lining. Easy to use pad change. Abrasive belt tension over appropriately dimensioned compression springs. Sanding belt relaxation for belt change by means of pneumatic Device for sensitive, distortion-free loading of new tapes. Upper Grinding unit and brush device (additional equipment) centrally motorized adjustable.

Timber guide in the entry area for hard guide and guide rails supported on both sides pinch rollers. Tilt-proof transport of profiled workpieces calibrated conveyor belts with continuously adjustable feed rate.

Automatic machine stop triggering by wood thickness control device. Optical display of the control panel.

Infeed table via fine, precise threaded spindle for lower Grinding chip removal manually adjustable via scale (resolution 0.1 mm). The length Column table guidance guarantees an absolute parallel adjustment. The Adjustment of the flight circle to the outfeed table is achieved by adjusting the height of the lower one Grinding unit via precise threaded spindle and scale display (resolution 0.1 mm) accomplished.

Clear, user-friendly arrangement of all electrical functional, operating and display elements on the front of the machine: grinding unit below, Grinding unit above, workpiece transport device, Grinding thickness setting, brushing device above/below, belt utilization, Operating display, fault display. All motors are against overload electrically secured.

Technical specifications :

Sanding belt speed: 25 m/sec.
Grinding width: 190 mm
Grinding thickness: 4 - 150 mm
Shortest workpiece length: 280 mm

Feed speed, continuously adjustable 5 - 25 m/min.

Sanding belt dimensions: 200 mm width, 1850 mm length

Electrical equipment according to VDE

Electrical connection : 400 V., 3/N, 50 Hz.

*Pneumatic connection: R 3/8", 6 bar, 80 NL grinding units: 2 x 5.5 kW feed:
0.75 kW height adjustment : 0.18 kW*

*Pneumatic connection: R 3/8", 80 NL, min. 6 bar, max. 8 bar Extraction air
quantity: 2 x
2000 to 2500 m³/h 20 - 25 m/sec.*

Extraction connection piece: 2 x 180 mm dia, on top of the machine housing

*External dimensions: without control cabinet 1750 mm wide, 1850 mm high, 1000
mm deep*

with control cabinet 1960 mm wide, 1850 mm high, 1000 mm deep

Working height: 835 mm

in the range of 4-20 mm only without guide rule

Paint : RAL 7030 stone gray with RAL 1018 zinc yellow

Additional equipment:

1 digital display for engine. grinding thickness adjustment

*1 facility for Oscillation. Abrasive belt utilization device for oscillating
Abrasive belt utilization to increase the service life of the abrasive belts
and improvement
of the surface finish by motor-driven adjustment of the grinding unit.
Connection value: 0.12 kW, 380 V, 3/N, 50 Hz*

*1 brush and finish device, for better surface finish, integrated in
the basic machine. Two special brush rollers 150 mm arranged one above the other
Diameter in synchronism function to the feed. Separate height adjustment
Brush rollers on precise carriage guides for post-wear correction.*

*1 pneumatic workpiece release device after brushing and finishing
Furnishings*

Pictures and VIDEO shows machine of the same type

(Technical data according to the manufacturer, without guarantee!)

VIDEO-LINKS



Technical specifications according to manufacturer's information / documentation

Engelfried Maschinentechnik GmbH

Elisabethenstr. 41 · 73432 Aalen Fon: (0049)07361-98660 · info@engelfried.com

Page: 3/6

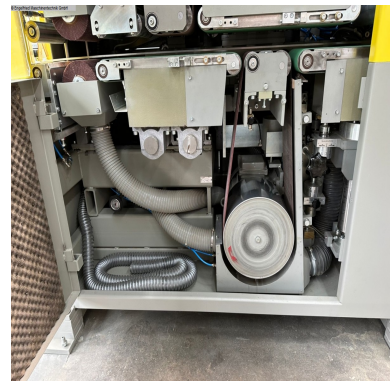
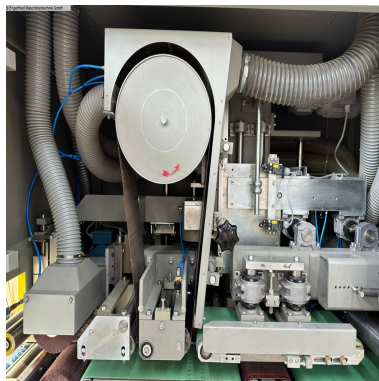
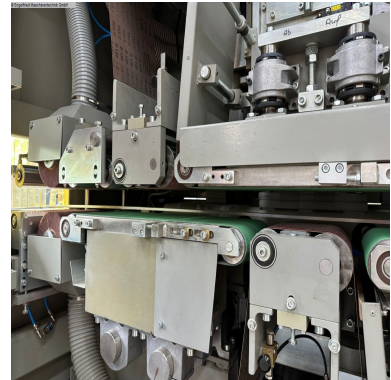
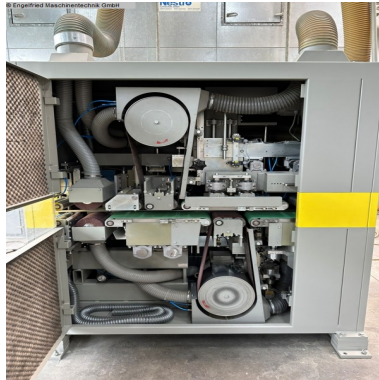
Sanding machine
HESS
Junior
Stock no. :1305-2699



WEB-LINK

https://lagermaschinen.de/maschinen-datenblatt/Sanding_machine/HESS/Junior/1305-2699

MACHINE PICTURES



Sanding machine
HESS
Junior
Stock no. :1305-2699

